



# LEADERSHIP WITH AI- DRIVING TRANSFORMATION IN THE **AI ERA**

in association with IBM Career Education

**Duration:** 12 Weeks

**Modules:** 11

**Hours:** 30–36 Hours Total

**Platform:** Zoom

**1 – 2 Days** Immersion Program at IBM Office



# MESSAGE FROM OUR LEADERS



**Manohar Thairani**

**President**

*"The essence of true education is not only to facilitate the students with tools to attain success in life but also to engrain values and skills in them."*

We, at Lloyd, work to incorporate the principles of modesty, compassion coupled with idea to effectuate innovation, growth and excellence. The curriculum of the program is industry oriented. Academic rigor is reflected in the course design and delivery of this program and I believe infusing technology into the management program will create futuristic jobs. Various pedagogic tools help our students develop not only a holistic business perspective but an ability to seize opportunities in a competitive business environment. At the same time they remain committed towards the betterment of the society.

LBS is supported by state of the Art Infrastructure and coupled with industry oriented curriculum based on real life practical training. Academic rigor is reflected in the course design, delivery of academics and dedicated team of faculty members, equipped with right mix of industry-academic-research experience.

Members of faculty are involved in their pursuit of developing and disseminating knowledge through teaching, research and consulting. Lloyd Business School welcomes you to join us to realize your full potential under our able guidance.



# MESSAGE FROM OUR LEADERS



**Prof. (Dr.) Vandana Arora Sethi**

**Chief Strategy Officer &  
Head of Growth at Lloyd**

*Preparing you not only for today  
but ensuring a futuristic career  
for you as well.*

*I extend a warm welcome to  
all management aspirants  
for admission 2023.*

*May the best ones get selected  
at Lloyd!*

As technology continues to advance at a frenetic pace and world becomes increasingly unpredictable, there is change everywhere.

And not just change mandated by the AI & IT but change that Mother nature keeps challenging us with – floods, draughts, tsunamis and the deadly pandemics like Covid 19. During the 2 years of standstill of Covid, the vacuum cleaner salesman had no sales. He could neither visit his prospects, nor give them a demo. He analyzed this & worked out a plan. He contacted his earlier buyers, interacted with them on FaceTime & based on trust relationship he had established with them, sought their experiences and with their permission, stand these FaceTime conversations with his prospects. He needed new skills: mobile skills, tact, networking & confidence.

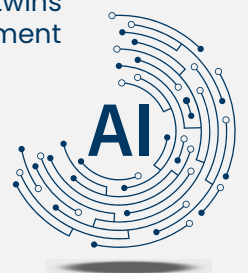
Skills not taught in the post graduate management programme. More & more employers are moving beyond degrees and job titles to focus more on the skills the changing business environment needs.

So perhaps this is the time to redress this short coming with a new look at one B-school environment and incorporate technology-based education.

Lloyd Business School is fully prepared for opportunities that the 4th Industrial Revolution is offering which emphasizes the interconnections of machines & systems to achieve optimal performance & productivity gains, which is the aim of any business.

Industrial revolution 5.0 is said to take it a step further. By this, fine tuning is created b/w human & machines, a collaboration b/w automated technology's ultra-fast accuracy and human's intelligence & creativity.

PGDM-5.0 at Lloyd Business School focuses on use of modern cutting edge technologies like AI, IoT, Big Data, Cloud Computing, Block Chain, Digital twins along with training the management students with leveraging human creativity & intelligence.



# IBM : PROGRAM INTRODUCTION NOTE



Initiative of the Career Education Program

**In collaboration with:**



Lloyd Business School,  
Greater Noida

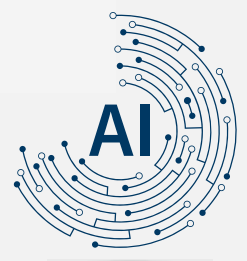
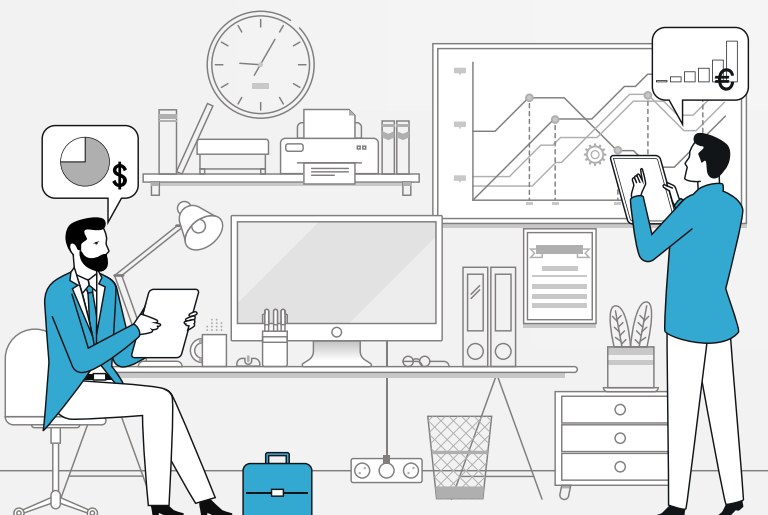
We are thrilled to partner with Lloyd Business School to bring you this unique executive education program, designed to empower leaders with the skills and insights needed to thrive in today's dynamic business environment.

At IBM, we believe that innovation is fueled by continuous learning and adaptability. This program will equip you with cutting-edge knowledge in areas such as artificial intelligence, data analytics, and digital transformation.

Our expert faculty and industry leaders will guide you through practical case studies, interactive workshops, and collaborative projects. As you embark on this journey, we encourage you to embrace curiosity and collaboration. Your participation is not just an investment in your career, but a commitment to leading change in your organization and beyond.

We look forward to an exciting and enriching experience together!

Best regards,  
IBM Team



# MESSAGE FROM PROGRAM DIRECTOR



**Dr. Neetu Kamra**

**IBM Certified in Descriptive Analytics,  
Predictive Analytics & Design Thinking**

Dear Senior Leadership,

The scope and relevance of AI in growing organizations today are immense. Considering its impact on the workforce, privacy concerns, and data management challenges, AI has become the need of the hour.

We have designed this course to be as relevant and practical as possible, incorporating real-world case studies from IBM and other impactful organizations. The curriculum follows an aggressive learning schedule, ensuring hands-on experience with AI tools to deepen your understanding.

We wish you success in your journey of continuous change and evolution.

Best regards,  
[Program Director]





# ABOUT THE PROGRAM

In today's fast-evolving business landscape, **AI is not just a tool but a strategic enabler**. The Leadership with AI program is designed to equip senior leaders with the knowledge and skills needed to **leverage AI for decision-making, innovation, and organizational growth**.

## What to Expect?

|  |  |   |
|--|--|---|
| <b>AI Strategy &amp; Implementation</b> – Understand AI's role in shaping business models and operations.                | <b>Workforce Transformation</b> – Explore the impact of AI on talent management and leadership dynamics. | <b>Privacy &amp; Data Management</b> – Learn how to navigate ethical AI usage, data governance, and compliance. |
| <b>Real-World Case Studies</b> – Gain insights from AI-driven organizations like <b>IBM and other industry leaders</b> . | <b>Hands-on Learning</b> – Engage with cutting-edge AI tools and frameworks for practical application.   |   |

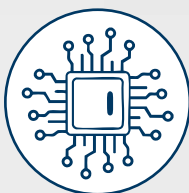
## Why Join This Program?



Learn from the Best



**Industry-Backed Curriculum:**  
Developed by IBM & Leading Business Experts



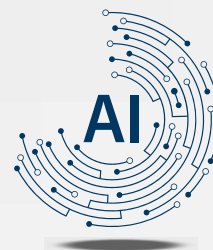
**Hands-On AI Learning:**  
Access to AI, ML & Generative AI Tools



Certificate from IBM & Lloyd Business School



Networking with Industry Leaders & AI Practitioners



# PROGRAM DETAILS



## **MODULES**

11 Modules



## **DURATION**

12 Weeks  
(30-36 hours)  
Live interactive  
online classes



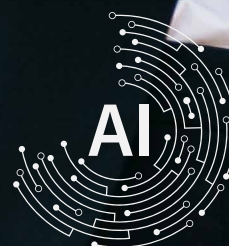
## **MODE**

**Online**  
(One-Day  
Immersion  
Program at  
IBM Office)  
(Optional)



## **COMMITMENT**

4-6 Hours  
per Week



# IBM TRAINERS



**Mr. Pratyush Praveen**

- ✓ Pratyush is **Practice Manager**, in IBM Expert Labs for Data Science & AI and OpenPages at IBM India Pvt. Ltd. He is managing the delivery of multiple Data Science & AI and Open Pages projects.
- ✓ He is ITIL® Certified. He has over 20 years of experience in the field of Analytics and has worked across geographies and industries.
- ✓ He leads the elite team of experts on Data Science, Artificial Intelligence and GRC. His team works on different Data Science, AI and GRC (Governance, Risk & Compliance) products from IBM including IBM Watson, IBM Cognos Analytics, IBM Planning Analytics, IBM SPSS and OpenPages.
- ✓ He has conducted multiple sessions on Analytics & AI. His virtual sessions can on IBM Cognos Mobile can be found on TechGig and on IBM Cognos Analytics on YouTube.
- ✓ His sessions on Data Science and AI / Emerging Technologies have been well received at **ICSI, IITs and IIM**.
- ✓ His prestigious customers are **American Express**, Australand, BILT, **Deloitte Australia**, FINO, **Infosys**, Shree Cement, **State Bank of India**, **UltraTech Cement**, **United Spirits Limited**, **HDFC** and **ICICI Bank**.
- ✓ His team was one of the first ones to implement chat-bot for COVID-19, not only in India for CMR, ICMR, and others, but also across the globe in a record time.
- ✓ He is shaping 2 projects with India's largest banks (one PSU and another private) on Data Science and AI.
- ✓ He lives in Mumbai with his wife and a daughter.





# IBM TRAINERS



**Mr. Hrishikesh Pathak**

- ✓ Hrishikesh is a **Delivery Consultant** with **IBM Expert Labs**.
- ✓ He has over 11 years of experience and has delivered successful projects in the areas of Data Science, Machine Learning, AI and Optimization.
- ✓ He has advised clients on the architecture and implementation of IBM Software Products- IBM SPSS, IBM Watson Services, IBM Cloud Pak for Data, IBM ILOG CPLEX.
- ✓ He has conducted Corporate and University Training Sessions on Data Science, Machine Learning and AI.
- ✓ Key Clients: BHP(Australia), ICICI, State Bank of India, Central Bank of India, Sears(USA), CBIC, Tata Steel, Titan.



# TRAINERS



## **Dr. Saumendra Mohanty**

### **Corporate Consultant in AI**

Dr. Saumendra Mohanty is a multifaceted professional who seamlessly bridges the worlds of academia and industry. With over 30 years of experience in multinational technology companies, he has established himself as a leader in the field.

Dr. Mohanty's educational background, including a B.Tech in Electronics from NIT Calicut and a PGP from IMI Delhi, laid the foundation for his impressive career trajectory.

Throughout his career, Dr. Mohanty has held key leadership positions in renowned organizations such as Thermax, Wipro, Hughes Network Systems, Primus Telecommunications, and Tanla Platforms. His expertise extends beyond corporate leadership, as he has also proven himself to be a successful serial entrepreneur. Dr. Mohanty has demonstrated his acumen in the startup ecosystem by not only founding technology ventures but also successfully raising funds and achieving profitable exits.

In recent years, Dr. Mohanty has turned his attention to academia, bringing his wealth of industry experience to the classroom. As a Professor of Analytics and AI, he has taught at several prestigious institutions, including Bennett University and Sharda University. His academic focus areas include Statistics, Research Methodologies, Machine and Deep Learning with Python, and Generative AI.

He is currently Adjunct Professor of Practice (AI) in Bennett University and Area Chair & Professor (AI) in Lloyd Business School.



# TRAINERS



**Prof. Mohit Agrawal**

**Corporate and Academic Trainer**

Mr. Mohit Agrawal serves as an Associate Professor of IT and Analytics at Lloyd Business School. With 15 years of teaching experience at respected institutes across Delhi and NCR, he brings a solid foundation of knowledge and practical insights to his students. His industry experience is extensive, having worked in insurance, banking, and retail lending sectors. He has been associated with companies like Bajaj Allianz, ICICI Bank, and Magma Fincorp, managing credit analysis wings for over five years.

This experience has taught him the critical role of analytics in various domains, highlighting its importance in driving informed decision-making and strategic planning. Mr. Agrawal has dedicated a significant part of his career to academic collaboration. He has been involved with several educational institutions such as BML Munjal University, Galgotias University, FIIB (Delhi), Accurate Institute, Sriram Business School, Sharda University, IILM, and AIMA. In these roles, he has contributed to numerous training and development sessions, focusing on Advanced Excel, Power BI, Excel Dashboarding, and Tableau.



**Prof. Neha Issar**

**IBM Certified Consultant,  
IBM Spark and Scala**

Ms. Neha Issar is a proactive professional with more than 13 years of experience in the corporate and academic. Her expertise extends to training in various areas, including Generative AI in HR domain, Database & Query Language, Data Science using R, Data Analytics for Business Decision-making, an Overview of Python, Management Information Systems, and Enterprise Resource Planning. Ms. Issar earned her commerce degree from Dr. B.R. Ambedkar University, Agra and holds a postgraduate diploma in Finance and Marketing from JIMS Kalkaji. She is currently pursuing a PhD in Management from Amity Business School. Her corporate journey includes serving as a Data Researcher at S&P Global Market Intelligence Pvt. Ltd., working on projects for prominent organizations such as Aditya Birla Group and Times Internet in et.com. She also held the position of Senior Manager Investor Relations at Opera Gratia Pvt Ltd. In addition to her extensive experience, Ms. Issar holds several valuable certifications, including IBM Spark and Scala certification, IBM Data Science certification, and Cybersecurity certification. She is also a practitioner in IBM Enterprise Design Thinking and has received certification from IIM Bangalore in Predictive Analytics.



### ELIGIBILITY

Minimum 10 Years  
of Work Experience  
(as on the program  
start date)

### FACULTY

IBM-Certified  
Trainers  
& Senior Industry  
Practitioners

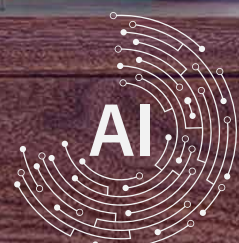
### TARGET AUDIENCE

Mid-to senior-level  
executives with  
10–15 years of  
experience in  
leadership roles.

### Certification

Upon successful  
completion, participants  
will be awarded  
a **Verified Digital  
Certificate** from **IBM  
& Lloyd Business School**

## AWARDED WITH CERTIFICATE





# COURSE OVERVIEW



As AI transforms industries, business leaders must strategically integrate AI while ensuring ethical governance, innovation, and human-centric decision-making.

This program equips executives with the knowledge to leverage AI for competitive advantage, navigate ethical challenges, and develop AI-driven leadership strategies.

AI is already re-shaping our polity, our economy, our security and even our society. AI is writing the code for humanity in this century. But, it is very different from other technology milestones in human history (Prime Minister Shri. Narendra Modi at the AI Action Summit, Paris (February 11, 2025)).



# MODULE OVERVIEW

**By the end of this course, participants will:**

- Gain executive-level AI fluency for strategic and operational contexts.
- Lead responsible, human-centered AI adoption.
- Embed AI into organizational culture and business strategy.

## Module 1:

### The Future of Leadership in the AI Era

- Redefining Leadership in a Tech-Driven World.
- AI's Impact on Executive Roles & Strategic Thinking.
- Traditional vs. Transformational Leadership.
- Caselet.

- The Language of AI for Business Decision-Makers.
- Key Technologies (ML, NLP, GenAI, RPA) Explained.
- From Data to Insight: AI as a Strategic Enabler.
- What to Know vs. What to Delegate as a Leader

## Module 2:

### Executive AI Fluency – What Leaders Need to Know

## Module 3:

### AI-Driven Strategic Thinking

- Embedding AI into Business Strategy.
- AI as a Catalyst for Competitive Advantage.
- Aligning AI with Corporate Vision and Mission.

- From Automation to Innovation.
- AI for New Business Models and Products.
- Case Study: AI-Powered Disruption in Retail/Healthcare/Banking.
- Design Thinking + AI = Innovation Roadmap.

## Module 4:

### Driving Innovation with AI

## Module 5:

### Organizing for AI-Led Transformation

- Governance of AI Projects and Programs.
- Managing AI Portfolios across Departments.
- Developing Internal AI Champions.
- Tool: AI Transformation Readiness Checklist.



*continued on next page...*

- Cross-Functional Collaboration for AI Adoption.
- Stakeholder Management in AI Rollouts.
- Change Management in the Age of Disruption.
- Workshop: Communicating AI Change with Impact.

#### Module 6:

### Leading AI Change Across Functions

#### Module 7:

### Ethics, Responsibility, and Risk in AI Leadership

- Responsible AI Principles (Fairness, Bias, Privacy).
- Regulatory Landscapes (India, EU, US Overview).
- Risk Mitigation and Crisis Response. Case Study: AI Gone Wrong – Leadership Lessons Learned.

- Future Skills for AI-Empowered Teams.
- Coaching, Not Controlling: New Age Leadership.
- Creating Agile, Learning-Oriented Organizations.
- Matrix: Roles Most Impacted by AI in Enterprises.

#### Module 8:

### Building the AI-Ready Workforce

#### Module 9:

### Personal Leadership Transformation

- Leading Self in the AI Era.
- The Inner Game: Resilience, Agility, Identity.
- Growth Mindset + Tech Fluency = Leadership 4.0.
- Reflection: Personal Leadership Audit in a Digital World.

- From Intuition to Data-Driven Leadership.
- Creating a Culture of Data Curiosity and Openness.
- Using AI for Real-Time Decision Support.
- Tool: The Leader's AI Dashboard – What to Track and Why.

#### Module 10:

### The Art of Leading with Data & Intelligence

#### Module 11:

### The Sustainable AI Leader

- Leading with Purpose in a Tech World.
- AI for ESG and Sustainability Goals.
- Long-Term Thinking in Fast-Moving Environments. Case Study: AI in Sustainable Supply Chains (e.g., Unilever, Nestlé).
- Creating Ethical, Inclusive, and Impact-Oriented AI Leadership Models.
- Build high-performance AI-ready teams.
- Navigate risk, disruption, and transformation with confidence.



continued on next page...

**TOOLS TO BE LEARNT:**

# AI & MACHINE LEARNING TOOLS FOR BUSINESS LEADERS

**IBM Watson –**  
AI-driven analytics,  
decision-making,  
and automation

**Microsoft Azure AI –**  
Cloud-based AI  
solutions for business  
transformation

**OpenAI GPT-4 &  
ChatGPT Enterprise –**  
Generative AI for  
business insights  
and automation

**Tableau & Power BI –**  
AI-powered data  
visualization and  
business intelligence

**TensorFlow &  
PyTorch –**  
AI frameworks for  
deep learning and  
business applications  
Pytorch and  
Scikit learn



For More Details, Please Contact:

**9220228613**

**Email:** info.eep@lloydbusinessschool.edu.in

**Program Fee:  
Rs. 20,000/-**

*(Covers IBM Certification & Learning Portal  
Access for Curated Courses).*

*GST will be charged at checkout.*

Scan  
To Register

